



Step 1 - Display Assembly

- We are currently working on a better method to open the iPad. This method will open the iPad, but will almost certainly result in broken retaining clips.
- Insert a metal spudger between the top edge of the display assembly and the rear panel assembly.
- Rotate the spudger away from you to release the tabs along the top edge of the display.
- Insert a second metal spudger between the top edge of the display assembly and the rear panel assembly to keep the tabs from snapping back into place.



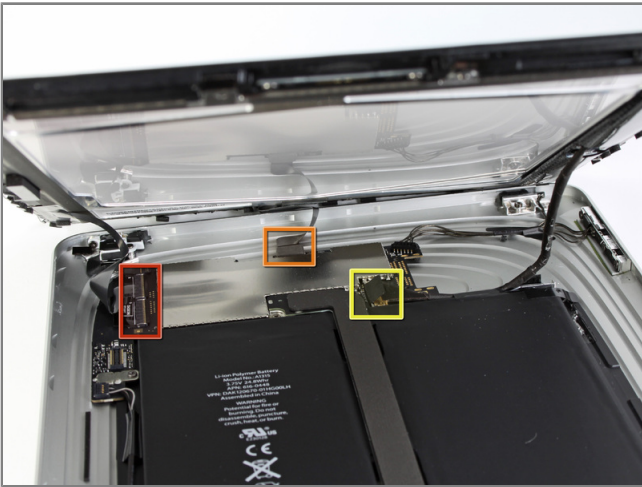
Step 2

- With one spudger, work your way along the right edge of the iPad, releasing tabs as you go.



Step 3

- Lift the display assembly away from the rear panel assembly by its right edge.
- Do not attempt to remove the display at this time, as it is attached to the rear panel assembly.



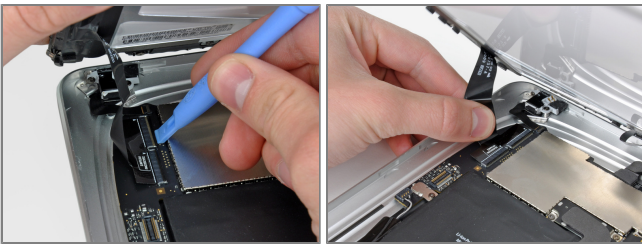
Step 4

- In the following steps, you will disconnect the three cables attaching the display assembly to the logic board. The cables are for the following components:
 - Digitizer
 - Ambient Light Sensor
 - Display Data Cable



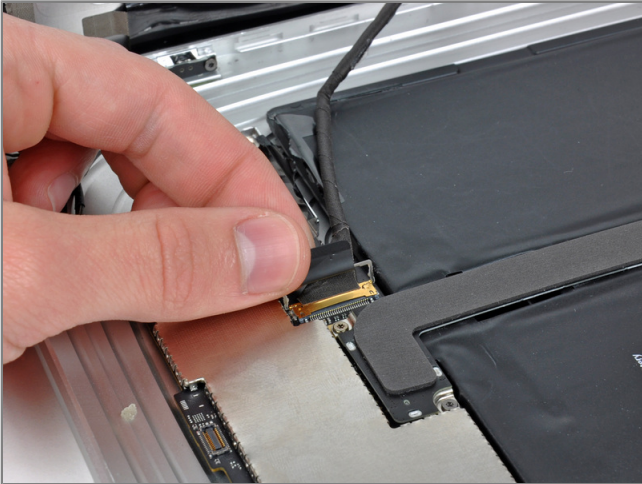
Step 5

- Use the edge of an iPod opening tool to flip up the retaining flaps holding the digitizer ribbon cables in their sockets on the logic board.
- Be sure you are flipping up the retaining flap, **not** the socket itself.
- Pull the digitizer ribbon cables straight out of their sockets.



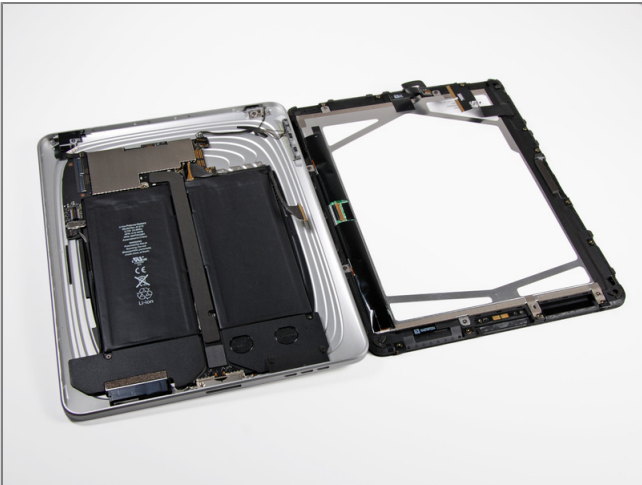
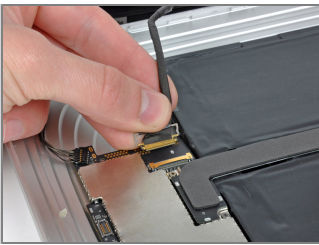
Step 6

- Use an iPod opening tool to remove the ambient light sensor connector from its socket by gently prying upward.



Step 7

- Disconnect the display data cable from the main board by flipping up the metal retainer by its black plastic pull tab.
- Pull the cable connector away from its socket.
- Pull the connector parallel to the face of the logic board.



Step 8

- Remove the display assembly from the rear panel assembly.



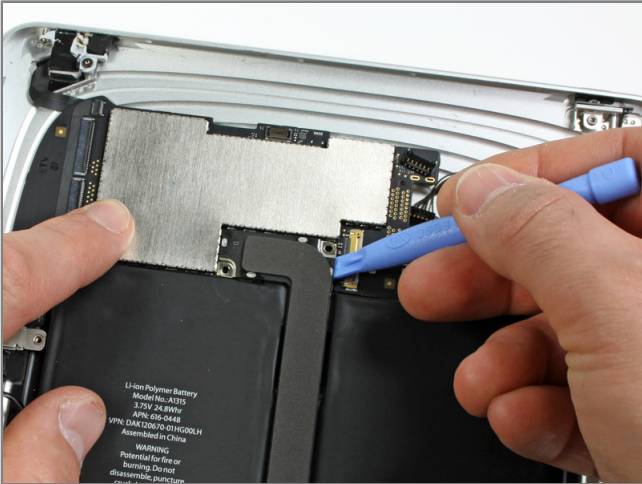
Step 9 - Logic Board

- Use the edge of an iPod opening tool to:
 - Pry the side button connector up off the logic board from underneath the wires.
 - Pry the speaker connector up off its socket on the logic board from beneath the speaker wires.
- Carefully flip up the ZIF ribbon cable retaining flap on the socket near the headphone jack.
- Be sure you are prying up on the retaining flap, not the socket itself.
- Pull the headphone jack ribbon cable toward the left side of the iPad to disconnect it from its socket.



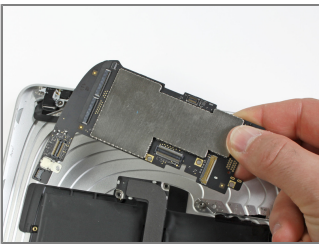
Step 10

- Remove the following screws securing the logic board to the rear panel assembly.
 - Two 4.56 mm T4 screws.
 - Two 3.76 mm T4 screws.



Step 11

- Use the edge of an iPod opening tool to carefully pry the dock cable connector straight up off the logic board.
- Lift the logic board out of the rear panel assembly.



Step 12 - Battery Replacement

- Remove the two 2.84 mm Torx screws securing the speaker assembly to the rear panel assembly.
- Remove the single Torx screw securing the middle of the dock cable to the rear panel assembly.



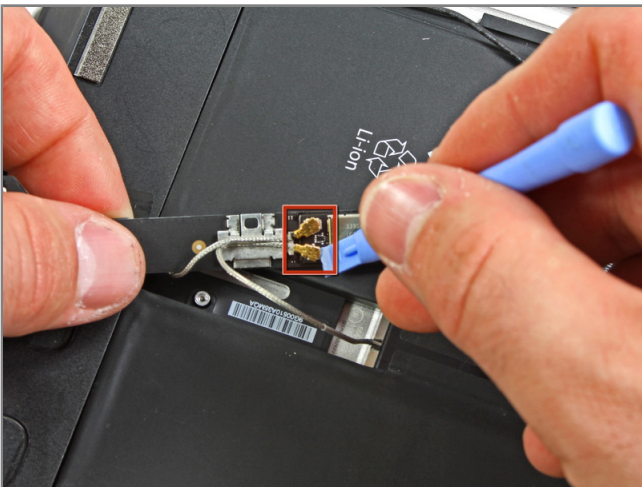
Step 13

- Remove the two 2.84 mm Torx screws securing the dock connector cable to the rear case.



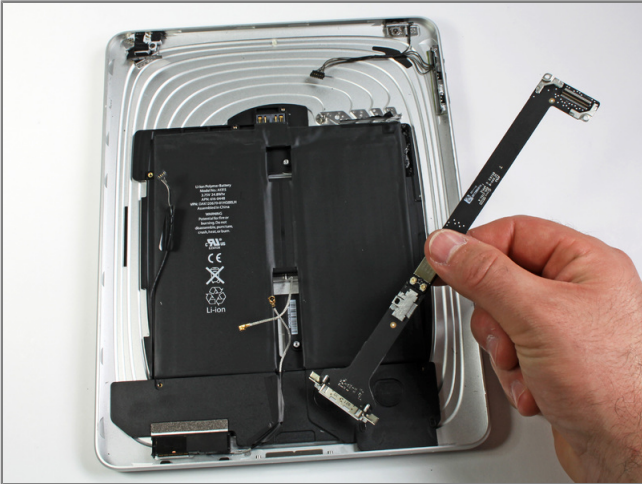
Step 14

- Using an iPod opening tool, carefully remove the plastic cover shielding the WiFi/Bluetooth board and dock connector cable.



Step 15

- Carefully pry the Wi-Fi and Bluetooth antennas up from their respective sockets on the Wi-Fi/Bluetooth board.



Step 16

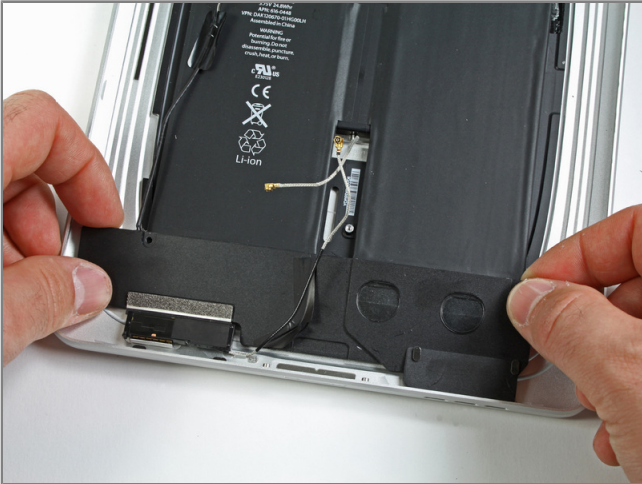
- Lift the dock connector cable out of the rear panel assembly.



Step 17

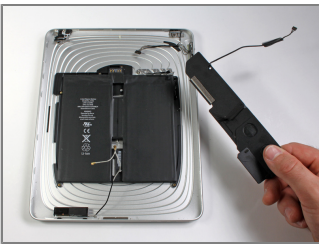
- De-route the speaker cable from the left side of the battery case.
- De-route the Wi-Fi antenna through its channel in the speaker assembly.





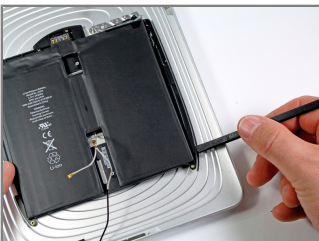
Step 18

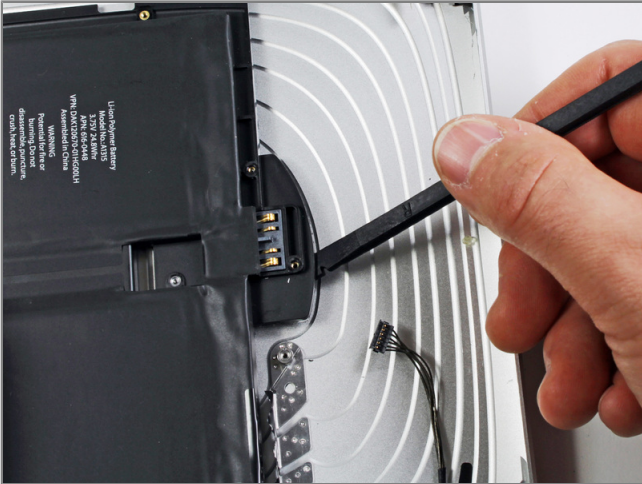
- Lift the speaker assembly and push it forward until the ports clear the bottom side of the lower case.
- Remove the speaker assembly from the rear panel assembly.



Step 19

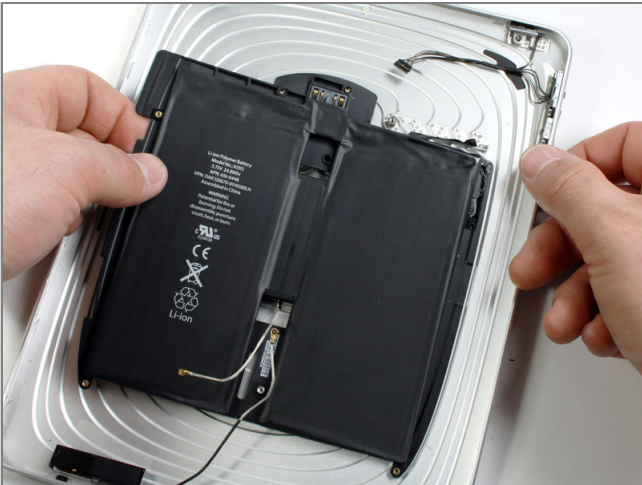
- The battery is held to the rear panel by an excessive amount of adhesive. Proceed with patience and caution.
- Use the flat end of a spudger to gently pry the battery up from the the lower case.
- Gently continue to enlarge the gap by wiggling the spudger and running it along the right side of the battery.
- Continue to pry until the right side of the battery is free from the rear panel.





Step 20

- Insert the flat end of a spudger under the top edge of the battery and continue to separate the adhesive.
- Continue doing so until the top of the battery is free from the rear panel.



Step 21

- When there is enough clearance, use your hands to peel the battery off any adhesive still securing it to the rear panel.
- Remove the battery from the rear panel.

